



ACCESSIBILITY PLAN

Last Updated: 7.28.24

Written and compiled by Leslie Makai Gleaves

Formatted by Evie McConkie

Updates by Mirielle Sanford and Emily Larsen

Quick Links

[Accessibility Statement](#)

[Contact Information](#)

[Accessibility Coordinator](#)

[Museum Address](#)

[Helpful Information](#)

[Museum Sensory Map](#)

[Wheelchairs and Strollers](#)

[Service Animals](#)

[Quiet Hours](#)

[Restrooms](#)

[Parking](#)

[Public Transportation](#)

[FaceTime Tours](#)

[Admission](#)

[Museum Accommodations](#)

[In-House Accommodations](#)

[Accommodations Available Upon Request](#)

[Accommodations Request Policy](#)

[Challenges at the Museum](#)

[Future Goals and Projects](#)

[Immediate Projects \(6-12 months\)](#)

[Short-Term Projects \(1-2 years to completion\)](#)

[Long-Term Projects \(2-5 years to completion\)](#)

[Recently Completed Projects \(last 1-2 years\)](#)

[Feedback Form](#)

Accessibility Statement

Our Museum is for everyone, artist, patron, and employee alike. The Springville Museum of Art is committed to continuing to make accessibility a part of everything we do – from the exhibitions and art we display – to our events, programs, and education curriculum – to how we build our collaborative team.

Contact Information

Accessibility Coordinator

For specific requests for accommodations or for feedback or questions about accessibility at the Museum, please contact our Accessibility Coordinator:

Mirielle Sanford

msanford@springville.org

801-491-5713

Museum Address

126 East 400 South
Springville, Utah

Museum Hours

Sunday – closed

Monday – 6:00-8:00 pm

Tuesday – 10:00 am – 5:00 pm

Wednesday – 10:00 am – 8:00 pm

Thursday – 10:00 am – 5:00 pm

Friday – 10:00 am – 5:00 pm

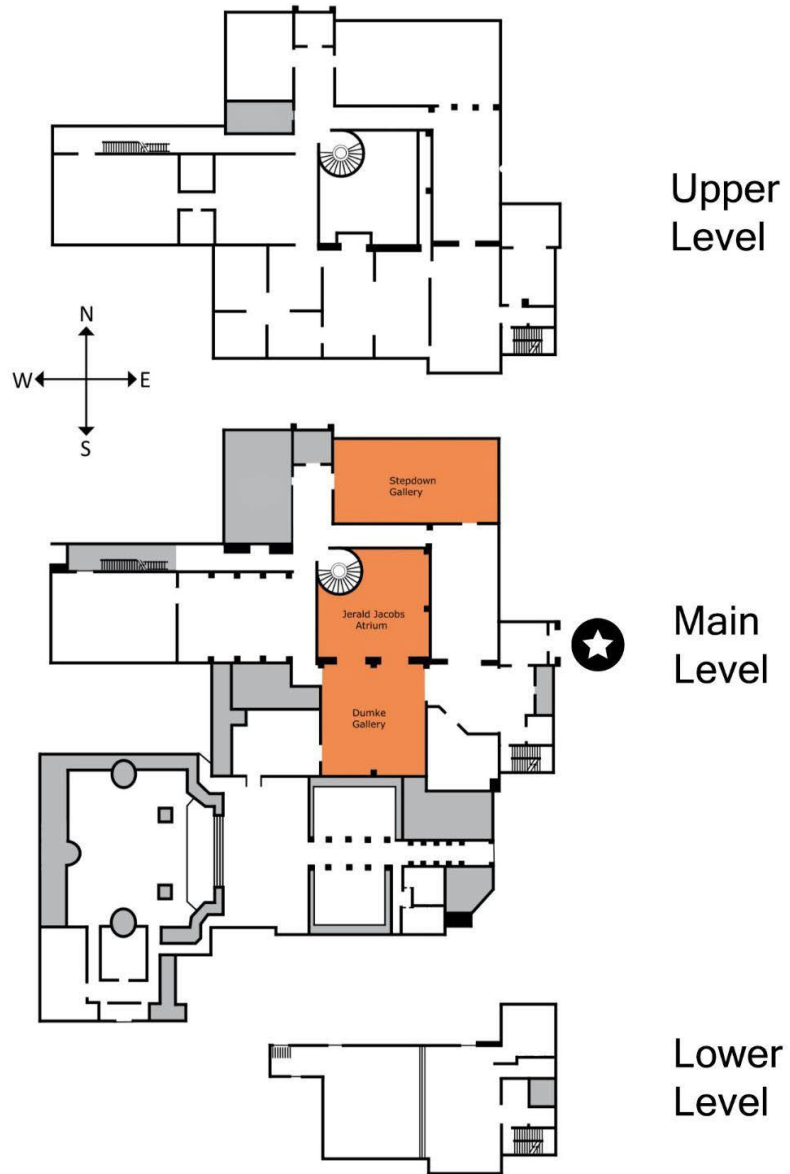
Saturday – 10:00 am – 5:00 pm

Helpful Information

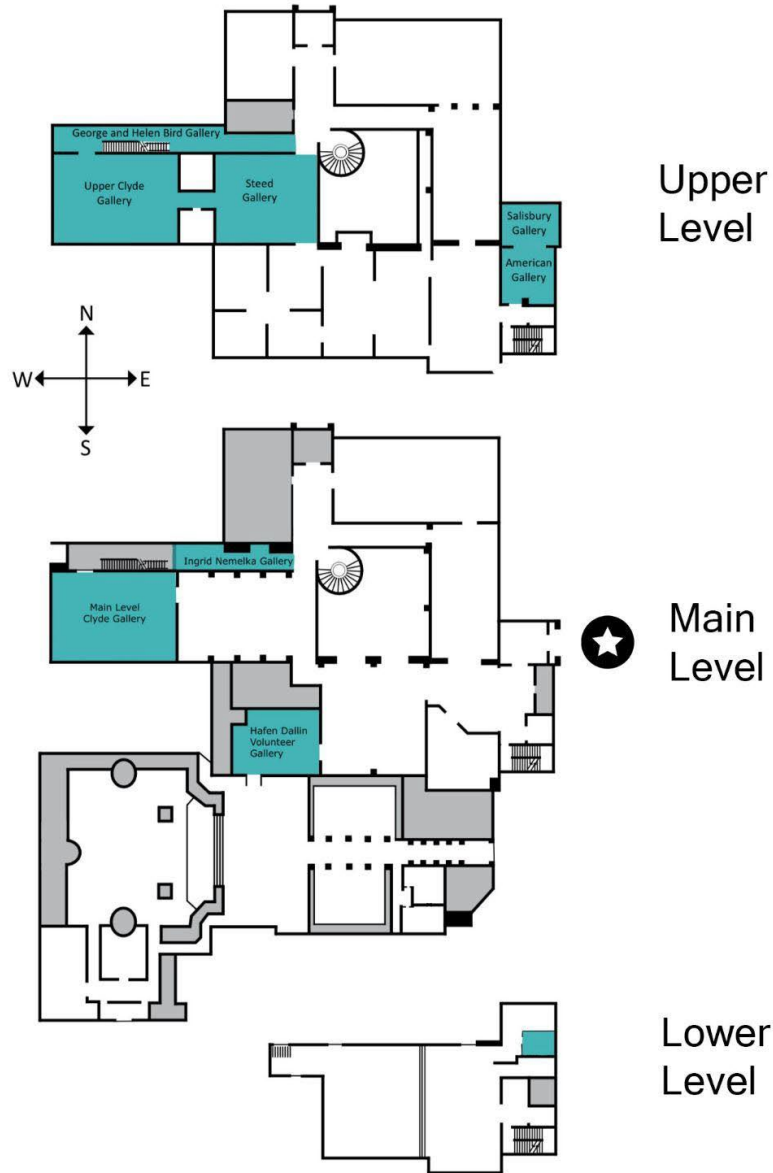
Museum Sensory Map

This annotated map of the Museum points out some of the important sensory aspects of our space, including quieter and louder areas and extreme lighting changes. It also includes information such as where you are able to find restrooms, elevators, and water fountains during your visit.

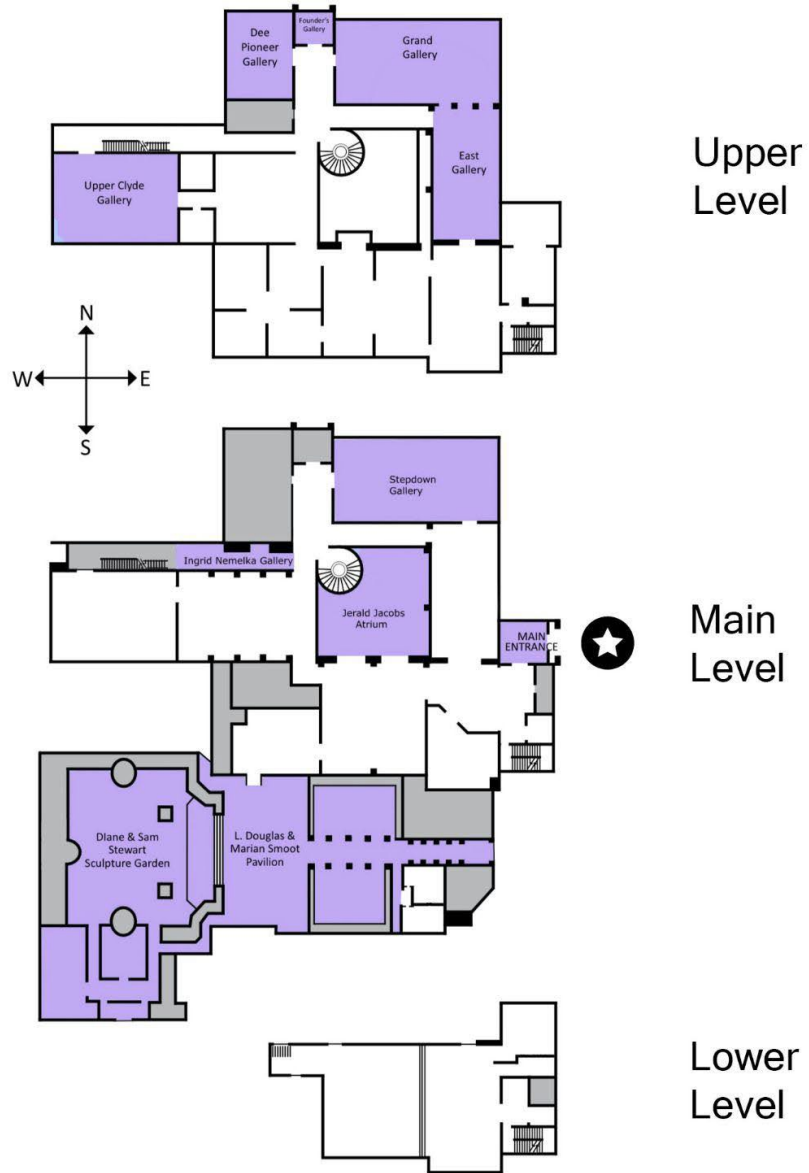
Crowded or Loud Areas



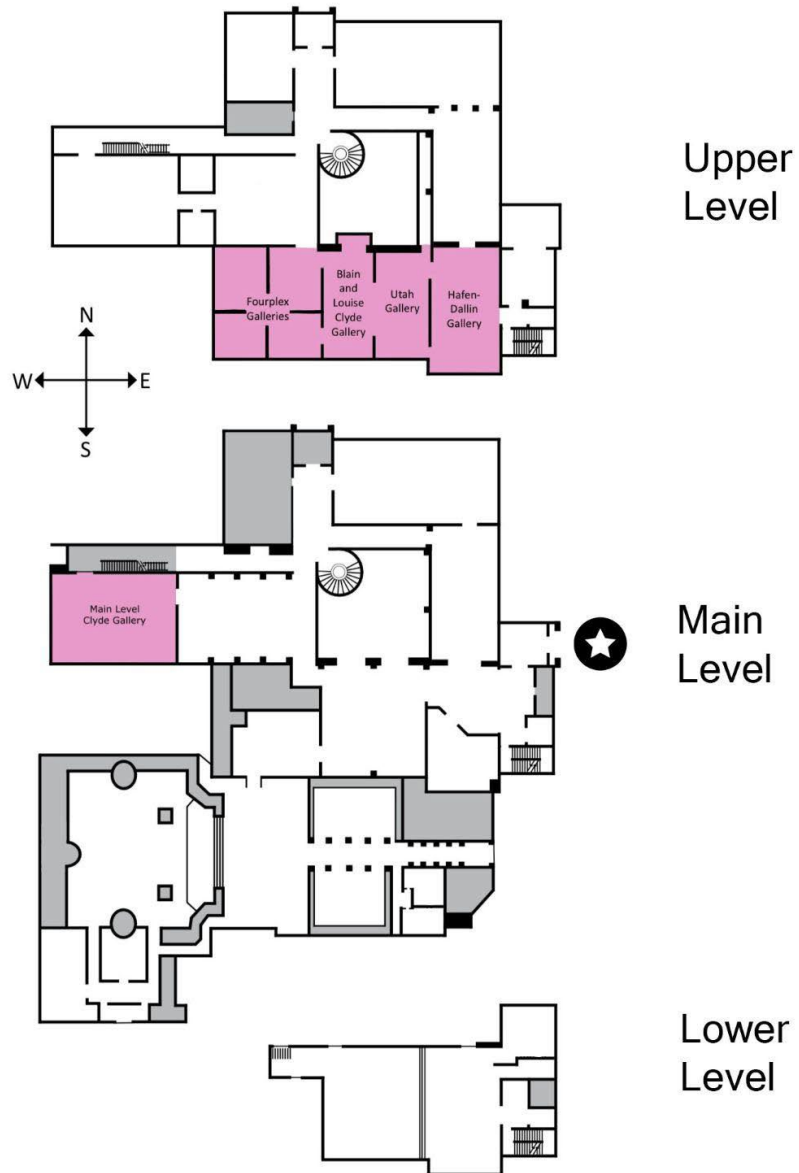
Quiet or Less Crowded Areas



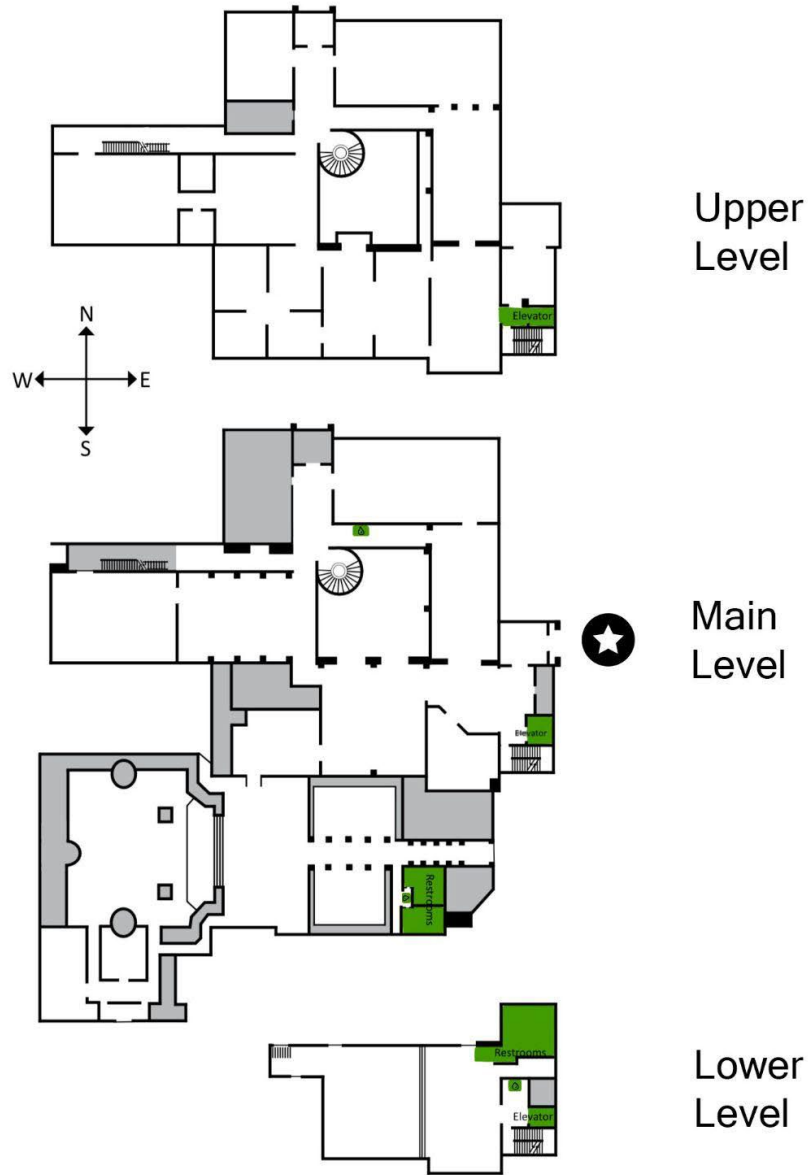
Natural Light



Subdued or Low Light



Restrooms, Elevators, and Water Fountains



Wheelchairs and Strollers

The Museum is wheelchair accessible. In 2023 the Museum added a temporary ramp to the southeast entrance of the Swanson Gallery to make this space wheelchair accessible. A photo of this is shown below.



(View of southeast entrance from gallery)

(View of west entrance from gallery)

Service Animals

Service animals specifically trained to aid a person with a disability are welcome at the Museum.

Quiet Hours

If you would like to attend the Museum at less busy times during the week, the best times to visit would be Tuesday-Friday, 10am to 12pm when there is not a field trip scheduled. To check if a field trip is scheduled contact our accessibility coordinator, Mirielle Sanford.

Restrooms

A family-style ADA restroom is located on the main level near the front desk. Additional accessible restrooms are located on the lower level.

Parking

Accessible parking is available in the Museum's main parking lot located on the East side of the building. Visitors may also be dropped off at the main door on the East side, ramps lead to the front doors

Public Transportation

The UTA Blue 821 line and the Red 822 line for Utah County stop at the Northeast corner of the Museum across the street.

FaceTime Tours

We do offer FaceTime tours of each gallery for anyone that would like to view the artwork up close.

Admission

The Museum is free admission, donations are welcome.

Museum Accommodations

In-House Accommodations

Ask the front desk upon arrival for any of the following items:

- Wheelchair (1)



- Cane chairs (2)



- Seating in every gallery
- Color-coded communication badges for docent-led tours upon request
- Large print labels for artworks
- Sensory Kit Materials (Available by request at the front desk of the museum when you visit):
 - Weighted shoulder pads
 - Fidgets
 - Pencil grips
 - Noise-reducing earmuffs
 - Foam earplugs
 - Sunglasses
 - Chews
 - Fidget cubes



Accommodations Available Upon Request

Please contact our accessibility coordinator at least 1 week in advance to request the following accommodations. If you can't give 1 week notice please contact as soon as possible and we will try our best to accommodate on shorter notice:

- **Interpreters** - ASL Interpreters can be made available for all school field trips and school programs (including Evening for Educators and all programming related to the All-State High School Art Show) and for

most other events and programs. We are working towards having more exhibition and education materials available in Spanish. Please contact us if you have a request for another language.

- **The "sensABLE Tour":** This guided program provides a multi-sensory exploration of art. It was specifically designed for students and visitors with disabilities. The "sensABLE Tour" encourages participants to engage with artwork through touch, sound, and movement, creating a richer and more meaningful experience for those who may benefit from alternative learning methods.
- **Audio tours** - Braille is not currently part of our exhibitions. We are currently working on an audio tour option.

Challenges at the Museum

While we are actively working hard to make the Springville Museum of Art completely accessible, here are several challenges at the Museum to consider before your visit:

- The flooring throughout the Museum is made of ceramic tile that may create an uneven walking surface.
- Parts of the museum do echo, especially the main atrium in the Museum where we have a water feature that makes noise.

Future Goals and Projects

While the Museum is working hard to make our facilities and programs accessible to everyone, there are still goals we are working towards to make your experience even more accessible.

Immediate Projects (6-12 months)

- Present large text in booklets, labels, signs, etc., which will become available at our front desk.
- Increase digital accessibility on website, app, social media.

Short-Term Projects (1-2 years to completion)

- Populate an app with audio and text for exhibition interpretation and labels
- Increase digital accessibility on website, app, social media.

Long-Term Projects (2-5 years to completion)

- Create a path along the perimeter of the Sculpture Garden to extend the wheelchair path.

Recently Completed Projects (in the last 1-2 years)

- Create updated signage and mark wheelchair accessible areas both indoors and outdoors.
- Created and adapted field trips and outreach programs for accessibility.
- Made available language accommodations, including ASL translators.
- Built accessible restroom, on the main floor of the Museum.
- Installed automatic door openers on main entrance.
- Installed a ramp in the Swanson Gallery.

Feedback Form

If you have any feedback on our accessibility plan or ways that you feel we could improve, we would love to hear from you.

Please fill out the 1-2 minute survey [here](#) (opens in new window).